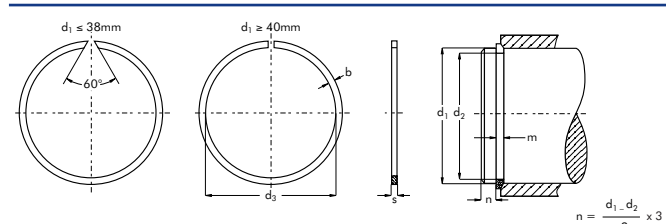

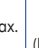


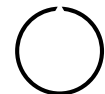
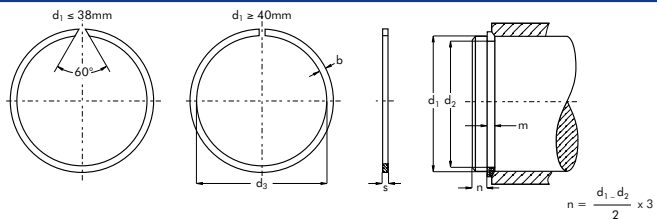
d <sub>1</sub>	M2400 SW	○				⌋			D A T A			d <sub>1</sub>	M2400 SW	○				⌋			D A T A		
		s (-0.1)	b (-0.1)	d <sub>3</sub> max.	(kg/1000)	d <sub>2</sub>	Δ	m min.	FN (kN)	FR (kN)	n <sub>det.</sub> x1000 (rpm)			s (-0.1)	b (-0.1)	d <sub>3</sub> max.	(kg/1000)	d <sub>2</sub>	Δ	m min.	FN (kN)	FR (kN)	n <sub>det.</sub> x1000 (rpm)
4	SW4	0.5	0.80	3.7	0.02	3.8	-0.09	0.6	0.20	1.25	275	48	SW48	1.5	2.30	45.8	3.60	46.5	-0.16	1.6	18.70	18.60	5.0
5	SW5	0.5	1.00	4.7	0.05	4.8		0.6	0.26	1.30	192	50	SW50	1.5	2.30	47.8	3.73	48.5		1.6	19.50	18.10	5.0
6	SW6	0.7	1.10	5.6	0.09	5.7		0.8	0.46	3.50	141	52	SW52	1.5	2.30	49.8	3.92	50.5		1.6	20.20	17.70	4.0
7	SW7	0.7	1.20	6.5	0.12	6.7		0.8	0.54	3.50	134	55	SW55	1.5	2.30	52.6	4.11	53.5		1.6	21.00	16.50	4.0
8	SW8	1.0	1.30	7.4	0.20	7.6		1.1	0.82	11.30	108	58	SW58	1.5	2.30	55.6	4.40	56.5		1.6	22.50	15.70	4.0
9	SW9	1.0	1.30	8.4	0.24	8.6		1.1	0.92	10.60	80	60	SW60	1.5	2.30	57.6	4.55	58.5		1.6	23.20	15.40	4.0
10	SW10	1.0	1.30	9.4	0.25	9.6		1.1	1.03	10.30	68	63	SW63	1.5	2.30	60.6	4.58	61.5		1.6	24.40	14.70	3.0
11	SW11	1.0	1.30	10.2	0.29	10.5		1.1	1.40	9.80	64	65	SW65	1.5	2.30	62.6	4.64	63.5		1.6	25.20	14.20	3.0
12	SW12	1.0	1.30	11.2	0.30	11.5	1.1	1.53	9.30	53	68	SW68	2.0	2.80	65.4	8.59	66.2	2.2	31.70	39.60	3.0		
13	SW13	1.0	1.30	12.2	0.34	12.5	1.1	1.70	8.90	43	70	SW70	2.0	2.80	67.4	8.71	68.2	2.2	32.50	38.40	3.0		
14	SW14	1.2	1.50	13.1	0.50	13.5	-0.11	1.3	1.80	17.00	45	72	SW72	2.0	2.80	69.4	8.80	70.2	2.2	33.70	37.60	3.0	
15	SW15	1.2	1.75	14.0	0.66	14.4		1.3	2.30	18.70	44	73	SW73	2.0	2.80	70.4	8.90	71.2	2.2	34.00	37.00	3.0	
16	SW16	1.2	1.75	15.0	0.69	15.4		1.3	2.47	17.70	38	75	SW75	2.0	2.80	72.4	9.32	73.2	2.2	35.00	36.20	2.0	
17	SW17	1.2	1.75	16.0	0.72	16.4		1.3	2.63	17.00	34	80	SW80	2.0	2.80	77.4	9.67	78.2	2.2	37.40	34.20	2.0	
18	SW18	1.2	1.75	17.0	0.75	17.4		1.3	2.78	16.20	30	85	SW85	2.5	3.40	82.0	16.00	83.0	2.7	44.00	72.00	2.0	
19	SW19	1.2	1.75	17.9	0.80	18.4		1.3	2.94	15.60	29	90	SW90	2.5	3.40	87.0	16.00	88.0	2.7	46.50	66.30	2.0	
20	SW20	1.2	1.75	18.7	0.84	19.2	1.3	4.10	15.00	26	95	SW95	2.5	3.40	92.0	18.20	93.0	2.7	49.20	61.80	2.0		
21	SW21	1.2	1.75	19.7	0.87	20.2	1.3	4.30	14.60	23	100	SW100	2.5	3.40	97.0	18.90	98.0	2.7	51.90	57.30	2.0		
22	SW22	1.2	1.75	20.7	0.91	21.2	1.3	4.50	14.00	21	105	SW105	2.5	3.40	101.7	20.70	102.7	2.7	65.00	54.00	2.0		
24	SW24	1.2	1.75	22.5	0.99	23.0	1.3	6.15	13.30	18	110	SW110	2.5	3.40	106.6	20.90	107.7	2.7	69.00	50.40	1.0		
25	SW25	1.2	1.75	23.5	1.00	24.0	-0.13	1.3	6.40	12.80	16	115	SW115	2.5	3.40	111.6	22.10	112.7	2.7	71.00	47.20	1.0	
26	SW26	1.2	1.75	24.5	1.10	25.0		1.3	6.65	12.50	15	120	SW120	2.5	3.40	116.5	24.10	117.7	2.7	75.00	44.80	1.0	
27	SW27	1.5	2.30	25.5	2.00	26.0		1.6	6.95	30.00	16	125	SW125	2.5	3.40	121.5	25.10	122.7	2.7	78.50	41.80	1.0	
28	SW28	1.5	2.30	26.5	2.11	27.0		1.6	7.20	29.30	15	130	SW130	2.5	3.40	126.4	26.60	127.7	2.7	84.00	39.60	1.0	
29	SW29	1.5	2.30	27.5	2.20	28.0		1.6	7.45	28.20	14	135	SW135	2.5	4.00	131.1	30.20	132.4	2.7	87.00	44.00	1.0	
30	SW30	1.5	2.30	28.5	2.33	29.0	1.6	7.70	27.50	13	140	SW140	2.5	4.00	136.0	31.10	137.4	2.7	91.50	41.60	1.0		
32	SW32	1.5	2.30	30.2	2.41	30.8	1.6	9.90	26.50	13	145	SW145	2.5	4.00	141.0	32.60	142.4	2.7	95.00	39.60	1.0		
35	SW35	1.5	2.30	33.2	2.51	33.8	1.6	10.80	24.40	11	150	SW150	2.5	4.00	145.9	32.80	147.4	2.7	98.00	37.50	1.0		
37	SW37	1.5	2.30	35.2	2.72	35.8	1.6	11.30	23.50	9	155	SW155	2.5	4.00	150.9	34.70	154.4	2.7	100.00	36.30	1.0		
38	SW38	1.5	2.30	36.2	2.83	36.8	1.6	11.60	22.70	9	160	SW160	2.5	4.00	155.8	36.60	157.4	2.7	103.00	35.60	1.0		
40	SW40	1.5	2.30	37.8	2.91	38.5	-0.16	1.6	15.50	22.00	8	165	SW165	2.5	4.00	160.8	37.40	162.4	2.7	106.00	34.20	0.5	
42	SW42	1.5	2.30	39.8	3.10	40.5		1.6	16.20	21.40	7	170	SW170	2.5	4.00	165.7	38.50	167.4	2.7	108.00	33.50	0.5	
43	SW43	1.5	2.30	40.8	3.25	41.5		1.6	16.50	21.10	7	175	SW175	2.5	4.00	170.7	39.40	172.4	2.7	117.00	32.20	0.4	
45	SW45	1.5	2.30	42.8	3.39	43.5		1.6	17.30	20.60	6	180	SW180	3.0	5.00	175.2	61.20	177.0	3.2	140.00	67.50	1.0	
47	SW47	1.5	2.30	44.8	3.48	45.5		1.6	18.20	19.20	6	185	SW185	3.0	5.00	180.2	63.90	182.0	3.2	144.00	66.20	1.0	

**Part Number** Référéce Teile Nummer Referencia de pieza
 **Tolerance** Tolérance Toleranz Tolerancia
 **Weight** Masse Gewicht Peso
 **Ring** Anneau/Circlips Ring Anillo
 **Groove** Gorge Nut Ranura



d <sub>1</sub>	M2400 SW	○				H			D A T A			d <sub>1</sub>	M2400 SW	○				H			D A T A		
		s (-0.1)	b (-0.1)	d <sub>3</sub> max.	 (kg/1000)	d <sub>2</sub>	$\Delta$	m min.	FN (kN)	FR (kN)	n <sub>det.</sub> x1000 (rpm)			s (-0.1)	b (-0.1)	d <sub>3</sub> max.	 (kg/1000)	d <sub>2</sub>	$\Delta$	m min.	FN (kN)	FR (kN)	n <sub>det.</sub> x1000 (rpm)
190	SW190	3.0	5.0	185.1	65.90	187.0	-0.29	3.2	148.0	64.0	1.0	300	SW300	4.0	7.5	292.1	214.20	295.0	-0.32	4.2	390.0	145.0	0.3
195	SW195	3.0	5.0	190.1	67.50	192.0		3.2	152.0	62.6	1.0	305	SW305	4.0	7.5	297.1	219.40	300.0		4.2	396.0	142.0	0.3
200	SW200	3.0	5.0	196.0	68.40	197.0		3.2	156.0	61.4	0.5	310	SW310	4.0	7.5	302.0	223.10	305.0		4.2	402.0	139.0	0.3
210	SW210	3.0	5.0	204.9	72.00	207.0		3.2	164.0	58.0	0.5	320	SW320	4.0	7.5	311.9	225.30	315.0		4.2	416.0	137.0	0.3
220	SW220	3.0	5.0	214.8	76.30	217.0		3.2	171.0	55.5	0.4	330	SW330	4.0	7.5	321.8	228.60	325.0		4.2	428.0	132.0	0.2
230	SW230	3.0	5.0	224.7	79.80	227.0		3.2	180.0	53.0	0.3	340	SW340	4.0	7.5	331.7	239.30	335.0		4.2	442.0	129.0	0.2
240	SW240	3.0	5.0	234.6	81.70	237.0	-0.36	3.2	187.0	51.0	0.3	350	SW350	4.0	7.5	341.6	251.20	345.0	4.2	455.0	123.0	0.2	
250	SW250	3.0	5.0	244.5	86.50	247.0		3.2	195.0	49.0	0.3	360	SW360	4.0	7.5	351.5	253.10	355.0	4.2	468.0	120.0	0.2	
260	SW260	4.0	7.5	252.4	179.00	255.0		4.2	338.0	168.0	0.4	370	SW370	4.0	7.5	361.5	259.20	365.0	4.2	482.0	117.0	0.2	
265	SW265	4.0	7.5	257.4	185.20	260.0		4.2	344.0	165.0	0.4	380	SW380	4.0	7.5	371.4	265.80	375.0	4.2	494.0	115.0	0.2	
270	SW270	4.0	7.5	262.3	197.70	265.0		-0.32	4.2	350.0	162.0	0.4	390	SW390	4.0	7.5	381.3	273.90	385.0	4.2	507.0	112.0	0.2
280	SW280	4.0	7.5	272.2	198.70	275.0			4.2	362.0	155.0	0.4	400	SW400	4.0	7.5	391.2	281.10	395.0	4.2	521.0	109.0	0.1
285	SW285	4.0	7.5	277.2	199.50	280.0	4.2		370.0	151.0	0.3	420	SW420	4.5	12.0	410.0	531.00	415.0	4.8	547.0	133.0	0.3	
290	SW290	4.0	7.5	282.1	205.30	285.0	4.2		377.0	148.0	0.3	460	SW460	4.5	12.0	449.5	582.00	455.0	4.8	600.0	126.0	0.2	

 <b>Part Number</b> Référence Teile Nummer Referencia de pieza	 <b>Tolerance</b> Tolérance Toleranz Tolerancia	 <b>Weight</b> Masse Gewicht Peso	 <b>Ring</b> Anneau/Circlips Ring Anillo	 <b>Groove</b> Gorge Nut Ranura
--	---	---	--	---



M2400/SW



CIRTEQ