

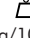


Circlips bombés pour alésages W-Sicherungsringe für Bohrungen Anillos para agujeros (arco) BOWED RINGS FOR BORES

d ₁	M1301 JW																		
		s	Δ	d ₃	Δ	a max.	b ≈	d ₅ min.	h	Δ	 (kg/1000)	d ₂	Δ	m min.	t	n			
40	JW40	1.75	+0.00 -0.06	43.5	+0.90 -0.39	5.8	3.9	2.5	3.5	+0.8	4.70	42.7	+0.25	3.4	1.35	4			
42	JW42	1.75		45.5		5.9	4.1	2.5	3.5		5.40	44.7		3.4	1.35	4			
45	JW45	1.75		48.5		6.2	4.3	2.5	3.6		6.00	47.7		3.5	1.35	4			
47	JW47	1.75		50.5		6.4	4.4	2.5	3.7		6.10	49.7		3.5	1.35	4			
50	JW50	2.00	+0.00 -0.07	54.2	+1.10 -0.46	6.5	4.6	2.5	4.0	+1.0	7.30	53.3	+0.30	3.9	1.65	5			
52	JW52	2.00		56.2		6.7	4.7	2.5	4.1		8.20	55.3		3.9	1.65	5			
55	JW55	2.00		59.2		6.8	5.0	2.5	4.2		8.30	58.3		4.1	1.65	5			
57	JW57	2.00		61.2		6.8	5.1	2.5	4.2		9.40	60.3		4.1	1.65	5			
60	JW60	2.00		64.2		+1.30 -0.54	7.3	5.4	2.5		4.3	+1.3		11.10	63.3	+0.35	4.2	1.65	5
62	JW62	2.00		66.2			7.3	5.5	2.5		4.4			11.20	65.3		4.2	1.65	5
63	JW63	2.00		67.2			7.3	5.6	2.5		4.4			12.40	66.3		4.2	1.65	5
65	JW65	2.50		69.2			7.6	5.8	3.0		5.0			14.30	70.3		4.8	2.65	5
67	JW67	2.50		71.5			7.7	6.0	3.0		5.0			15.30	73.3		4.8	3.15	5
70	JW70	2.50		74.5		+0.00 -0.08	7.8	6.2	3.0		5.1	+1.5		16.50	73.3	+0.54	4.9	1.65	5
72	JW72	2.50		76.5			7.8	6.4	3.0		5.2			18.10	75.3		5.0	1.65	5
75	JW75	2.50		79.5			7.8	6.6	3.0		5.2			18.80	78.3		5.0	1.65	5
77	JW77	2.50	81.5	7.9	6.7		3.0	5.3	80.3	5.0	1.65		5						
80	JW80	2.50	85.5	+0.00 -0.10	8.5		7.0	3.0	5.4	+2.0	20.40		84.0	+0.63	5.1		2.00	6	
82	JW82	2.50	87.5		8.5		7.0	3.0	5.4		24.00		86.0		5.1		2.00	6	
85	JW85	3.00	90.5		8.6		7.2	3.5	6.0		25.30		89.0		5.8		2.00	6	
87	JW87	3.00	92.5		8.6		7.3	3.5	6.1		31.00		91.0		5.9		2.00	6	
90	JW90	3.00	95.5	+0.00 -0.10	8.6		7.6	3.5	6.3	+2.0	33.00		94.0	+0.63	6.0		2.00	6	
92	JW92	3.00	100.5		8.7		7.8	3.5	6.4		35.00		96.0		6.1		0.50	6	
95	JW95	3.00	100.5		8.8	8.1	3.5	6.6	37.00		96.0	6.2	0.50		6				
100	JW100	3.00	105.5		+0.00 -0.10	9.2	8.4	3.5	6.9		+2.0	42.00	104.0		+0.63	6.3	2.00	6	
105	JW105	4.00	112.0	9.5		8.7	3.5	8.0	56.00	109.5		7.6	2.25	7					
110	JW110	4.00	117.0	10.4		9.0	3.5	8.1	64.50	114.5		7.7	2.25	7					
115	JW115	4.00	122.0	10.5		9.3	3.5	8.1	74.50	119.5		7.7	2.25	7					
120	JW120	4.00	127.0	+0.00 -0.10	11.0	9.7	3.5	8.2	+2.0	77.00	124.5	+0.63	7.8	2.25	7				
125	JW125	4.00	132.0		11.0	10.0	4.0	8.2		79.00	129.5		7.8	2.25	7				
130	JW130	4.00	137.0		11.0	10.2	4.0	8.3		82.00	134.5		7.9	2.25	7				
135	JW135	4.00	142.0		11.2	10.5	4.0	8.3		84.00	139.5		7.9	2.25	7				
140	JW140	4.00	147.0		11.2	10.7	4.0	8.4		87.50	144.5		8.0	2.25	7				
145	JW145	4.00	152.0		11.4	10.9	4.0	8.4		93.00	149.5		8.0	2.25	7				
150	JW150	4.00	158.0	12.0	11.2	4.0	8.5	105.00	155.5	8.1	2.75	8							

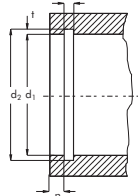
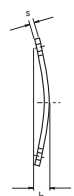
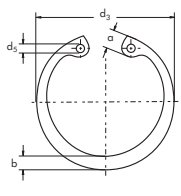
Part Number
Référence Teile Nummer Referencia de pieza

Tolerance
Tolérance Toleranz Tolerancia

Weight
Masse Gewicht Peso




Ring
Anneau/Circlips Ring Anillo

Groove
Gorge Nut Ranura



CIRTEQ

Circlips bombés pour alésages cote pouce W-Sicherungsringe für Bohrungen Zoll-Standard Anillos para agujeros pulgadas standard BOWED RINGS FOR BORES INCH STANDARD

d ₁	N1301 NJW	s																D A T A					
			Δ	d ₃	Δ	a max.	b ≈	w	d _{5 min.}	C ₁	C ₂	h	Δ	 (lbs/1000)	d ₂	Δ	m	Δ	n min.	Tc	Tg		
0.250	NJW25	0.015	±0.010	0.280	±0.010	0.068	0.025	0.015	0.029	0.115	0.133	0.036	±.006	0.08	0.268	±.001/.0015	0.018	+.002/-.000	0.027	530	130		
0.312	NJW31	0.015		0.346		0.069	0.033	0.018	0.029	0.173	0.191	0.036		0.11	0.330		0.018		0.027	660	160		
0.375	NJW37	0.025		0.415		0.085	0.040	0.028	0.039	0.204	0.226	0.047		0.25	0.397		0.029		0.033	1320	235		
0.438	NJW43	0.025		0.482		0.101	0.049	0.029	0.039	0.230	0.254	0.047		0.37	0.461		0.029		0.036	1550	285		
0.453	NJW45	0.025		0.498		0.101	0.050	0.030	0.045	0.250	0.274	0.047		0.43	0.477		0.029		0.036	1600	310		
0.500	NJW50	0.035	±0.002	0.548	±0.015	0.117	0.053	0.035	0.045	0.260	0.290	0.063	±.007	0.70	0.530	±.002	0.039	+0.003 -0.000	0.045	2470	425		
0.562	NJW56	0.035		0.620		0.137	0.053	0.035	0.045	0.275	0.305	0.063		0.86	0.596		0.039		0.051	2780	540		
0.625	NJW62	0.035		0.694		0.137	0.060	0.035	0.060	0.340	0.380	0.063		1.00	0.665		0.039		0.060	3090	705		
0.658	NJW68	0.035		0.763		0.137	0.063	0.036	0.060	0.400	0.440	0.063		1.20	0.732		0.039		0.066	3400	855		
0.750	NJW75	0.035		0.831		0.147	0.070	0.040	0.060	0.450	0.490	0.063		1.30	0.796		0.039		0.069	3710	975		
0.812	NJW81	0.042	±0.025	0.901	±0.015	0.160	0.077	0.044	0.060	0.490	0.540	0.073	±.008	1.90	0.862	±.003 .004	0.046	+0.003 -0.000	0.075	4820	1150		
0.875	NJW87	0.042		0.971		0.160	0.084	0.045	0.060	0.545	0.600	0.073		2.10	0.931		0.046		0.084	5190	1390		
0.938	NJW93	0.042		1.041		0.160	0.091	0.050	0.060	0.610	0.670	0.073		2.40	1.000		0.046		0.093	5570	1640		
1.000	NJW100	0.042		1.111		0.160	0.104	0.052	0.060	0.665	0.730	0.073		2.70	1.066		0.046		0.099	5940	1870		
1.023	NJW102	0.042		1.136		0.160	0.106	0.054	0.060	0.690	0.755	0.073		2.80	1.091		0.046		0.102	6070	1970		
1.062	NJW106	0.050	1.180	0.185	0.110	0.055	0.076	0.685	0.750	0.085	3.70	1.130	0.056	0.102	7500	2040							
1.125	NJW112	0.050	±0.003	1.249	±0.025	0.185	0.116	0.057	0.076	0.745	0.815	0.085	±.012	4.00	1.197	±.004 .005	0.056	+0.005 -0.000	0.108	7950	2290		
1.188	NJW118	0.050		1.319		0.185	0.120	0.058	0.076	0.800	0.870	0.085		4.30	1.262		0.056		0.111	8400	2490		
1.250	NJW125	0.050		1.388		0.185	0.124	0.062	0.076	0.875	0.955	0.085		4.80	1.330		0.056		0.120	8850	2830		
1.312	NJW131	0.050		1.456		0.185	0.130	0.062	0.076	0.930	1.010	0.085		5.00	1.396		0.056		0.126	9300	3120		
1.375	NJW137	0.050		1.526		0.185	0.130	0.063	0.076	0.990	1.070	0.085		5.10	1.461		0.056		0.129	9700	3340		
1.438	NJW143	0.050	±0.035 -0.025	1.596	±0.015	0.185	0.133	0.065	0.076	1.060	1.150	0.085	±.015	5.80	1.528	±.005 .005	0.056	+0.005 -0.000	0.135	10200	3660		
1.500	NJW150	0.050		1.660		0.185	0.133	0.066	0.076	1.120	1.210	0.085		6.10	1.594		0.056		0.141	10600	3990		
1.562	NJW156	0.062		1.734		0.205	0.160	0.079	0.076	1.140	1.230	0.115		9.10	1.658		0.068		0.144	11400	4240		
1.625	NJW162	0.062		1.804		0.205	0.160	0.080	0.076	1.150	1.250	0.115		10.10	1.725		0.068		0.150	11800	4590		
1.688	NJW168	0.062		1.874		0.205	0.170	0.085	0.076	1.270	1.380	0.115		10.80	1.792		0.068		0.156	12300	4960		
1.750	NJW175	0.062	1.942	0.205	0.175	0.082	0.076	1.260	1.360	0.115	11.50	1.858	0.068	0.162	12800	5340							

 **Part Number**
 Référence Teile Nummer Referencia de pieza

 **Tolerance**
 Tolérance Toleranz Tolerancia

 **Weight**
 Masse Gewicht Peso

 **Ring**
 Anneau/Circlips Ring Anillo

 **Groove**
 Gorge Nut Ranura

