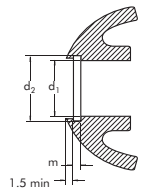
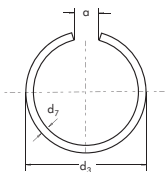


Anneaux en fil rond pour axes de pistons Runddrahringe Anillos en alambre circular para pistones **ROUND WIRE RINGS FOR PISTONS**

d ₁	DIN73130 SC	○				⊞			
		d ₇	Δ	d ₃	Δ	d ₂	Δ	m	Δ
10.0	SC10	0.8	±0.01	11.3	+0.5 -0.0	10.8		0.90	
12.0	SC12	0.8		13.6		12.8		0.90	
14.0	SC14	1.0		16.0		15.1		1.10	
15.0	SC15	1.0	±0.015	17.1		16.1		1.10	
18.0	SC18	1.5		20.7		19.7		1.60	
20.0	SC20	1.5		22.7		21.7		1.60	
22.0	SC22	1.5		24.8		23.7		1.60	
24.0	SC24	1.5	±0.02	27.2	+1.0 -0.0	25.7	+0.2 -0.0	1.60	+0.1 -0.0
25.0	SC25	1.5		28.2		26.7		1.60	
26.0	SC26	1.5		29.4		27.7		1.60	
28.0	SC28	1.5		31.4		29.7		1.60	
30.0	SC30	2.0		34.0		32.4		2.10	
32.0	SC32	2.0	±0.025	36.0	34.4	2.10			
35.0	SC35	2.0		39.0	37.4	2.10			

 **Part Number**
Référence Teile Nummer Referencia de pieza
 **Tolerance**
Tolérance Toleranz Tolerancia
 **Weight**
Masse Gewicht Peso
 **Ring**
Anneau/Circlips Ring Anillo
 **Groove**
Gorge Nut Ranura



$$a = \begin{matrix} +1.5 \\ -0 \end{matrix} \text{ at } d_1$$

